

INTERMOUNTAIN DISPOSAL, INC.

GRAEAGLE & DELLEKER RECYCLING CENTER PROCEDURES

RECYCLING PROCEDURES FOR ALUMINUM • GLASS • PLASTIC • TIN CAN

ALUMINUM



Beer and soda cans.
Rinsed and cleaned of materials.
No scrap metal (copper, steel, etc.)
Scrap metal can be taken to the Transfer Stations.

ALUMINIO

Cerveza y soda latas
A clarado y limpiada de materias.
No chatarra metal (cobre, acero, etc.)

GLASS: Beverage & Food Containers

ALL colors (green, brown, blue, clear, etc.)
are accepted. Labels are okay. No lids or corks.

Please NO window glass, mirrors, drinking glasses,
ceramics, light bulbs, fluorescent tubes.

LATAS DE ALUMINIO Y ESTAÑO

Jugos, cerveza, salsas, sodas, atún, sopa, etc.
Están bien las etiquetas. A clarado y limpiada de materias.



PLASTIC BOTTLES #1 & #2



Please NO plastic bags, tubs (margarine/yogurt containers, etc.), food/deli
trays, oil bottles, plant trays or pots, irrigation pipe, small furniture or toys,
or any styrofoam. These materials may be taken to the Delleker Transfer
Station or placed in your trash container for disposal.

All CRV Beverage #1 through #7 accepted. Rinsed and cleaned of materials, caps
removed. Transparent #1 (PETE) and #2 (HDPE) bottles & jugs. Milk jugs, water
bottles and soda bottles, detergent bottles, colored bottles, are okay. For plastic
bag recycling, contact your local grocery store.

BOTELLAS DE PLASTICO

Por Favor, NO:

- bolsas de plástico
- recipientes de plástico (de margarina, yogur, etc.)
- bandejas de comida o de carnes frías
- botellas de aceite
- bandejas o macetas de plantas
- tubería de irrigación
- muebles pequeños o juguetes
- cualquier tipo de styrofoam



Look for these symbols:



All "CRV" containers
will be accepted

Busque estos símbolos:



Todo recipiente "CRV"
será aceptado

TIN CANS

Juice, sauces, tuna, soup, etc. Remove labels. Rinsed and cleaned of materials.
No scrap metal (copper, steel, etc.)
Scrap metal can be taken to the Transfer Stations.
Please no household hazardous waste.

LATAS DE ESTAÑO

Jugos, salsas, atún, sopa, etc.
Están bien las etiquetas. A clarado y limpiada de materias.

NEWSPAPER & CARDBOARD RECYCLING PROCEDURES



CAJA DE RECICLAJE PARA EL PAPEL

PLEASE **DO NOT** PUT NEWSPAPER IN PLASTIC OR PAPER BAGS.
DO NOT BUNDLE WITH STRING

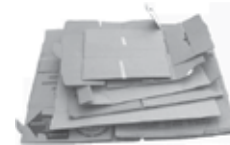
- ♻️ newspaper
- ♻️ cardboard (must be broken down and placed in bundles no larger than 3' x 3' in size)
- ♻️ phone books



FAVOR DE NO COLOCAR PAPEL
EN BOLSAS DE PLÁSTICO.

PLEASE NO:

- styrofoam
- paper tissues or towels
- paper with plastic coatings (photographs, milk/juice cartons, etc.)
- paper with food on it
- waxed paper/magazines
- foil-lined paper
- wrapping paper
- tyvex (non-tearing) envelopes
- office paper
- paperboard (soda boxes)



- ♻️ periódico
- ♻️ el cartón - debe de ser aplastado y colocado en bultos no más grandes de 3 pies por 3 pies amarrados.
- ♻️ directorios

POR FAVOR NO:

- styrofoam
- añuelos o toallas de papel
- papel con capas de plástico (fotografías, cartones de leche/jugo, etc.)
- papel con comida
- papel de cera
- papel de aluminio
- papel de envoltura
- sobres tyvex no rompibles
- office paper
- paperboard (soda boxes)

To receive CVR redemption on recyclable materials, take them to:

Delleker Recycling Center
73980 Industrial Way
Tuesdays & Wednesdays,
9:00 AM – 3:00 PM

Graeagle Recycling Center,
920 Blairsden/Graeagle Rd.
Thursday – Sunday,
9:00 AM – 4:00 PM



To dispose of trash material, take them to:

Delleker Transfer Station
73980 Industrial Way
Saturday – Tuesday, 9:00 AM – 4:00 PM

Graeagle Transfer Station
1 Blairsden/Graeagle Rd.
Thursday – Sunday, 9 AM – 4 30 PM

(530) 832-4879

www.intermountaindisposal.com

PLEASE NO HOUSEHOLD HAZARDOUS WASTE

IMPORTANT RECYCLING REMINDERS ...

- Not only does recycling save landfill space, it also saves energy and water, conserves natural resources, and reduces pollution.

We appreciate your cooperation.

ALGUNOS CONSEJOS SOBRE EL RECICLAJE ...

- El reciclaje no solamente nos ahorra espacio de tierra para los desechos, sino también nos ahorra energía y agua, conserva los recursos naturales, reduce el nivel de contaminación del aire.